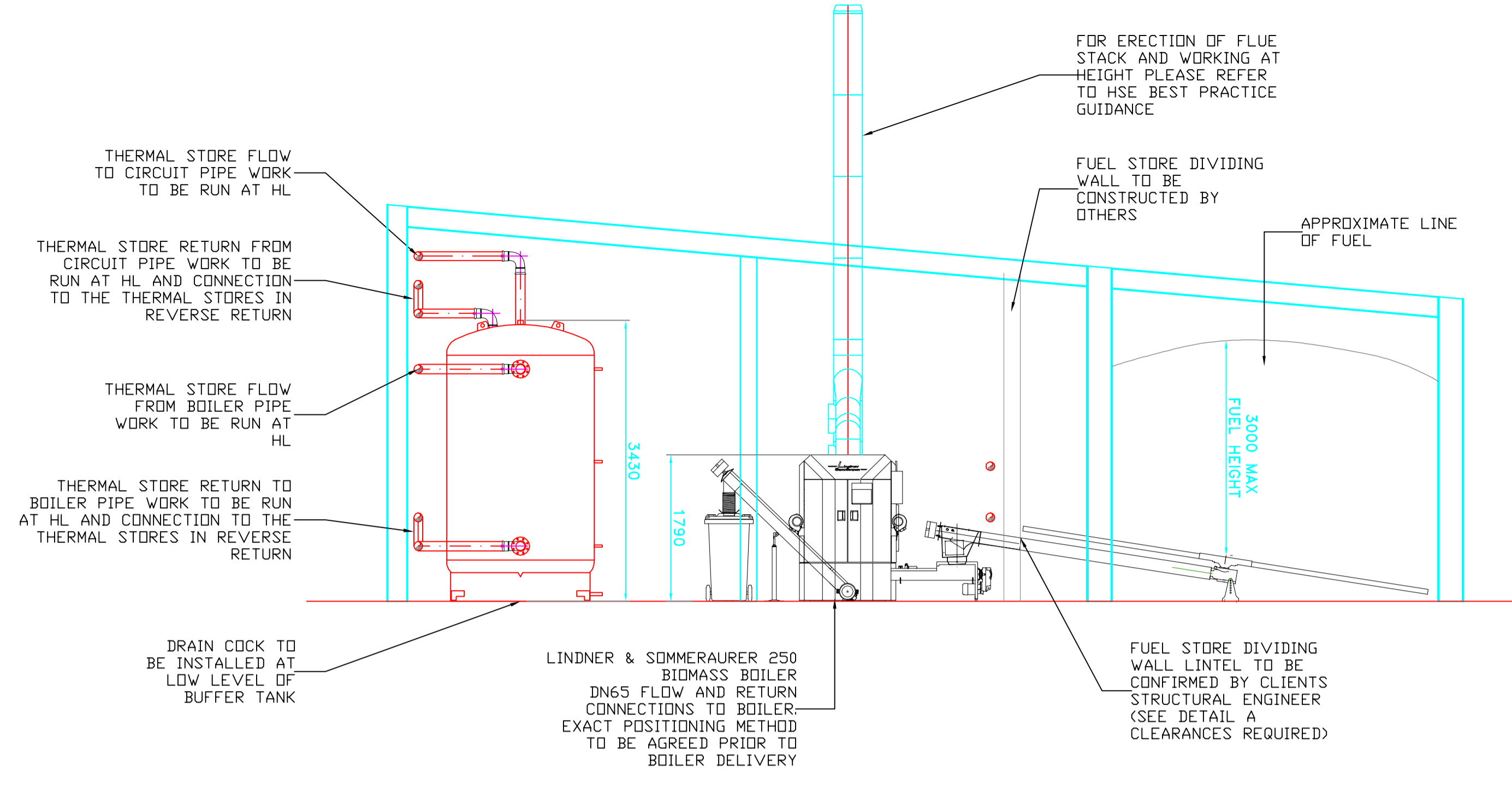
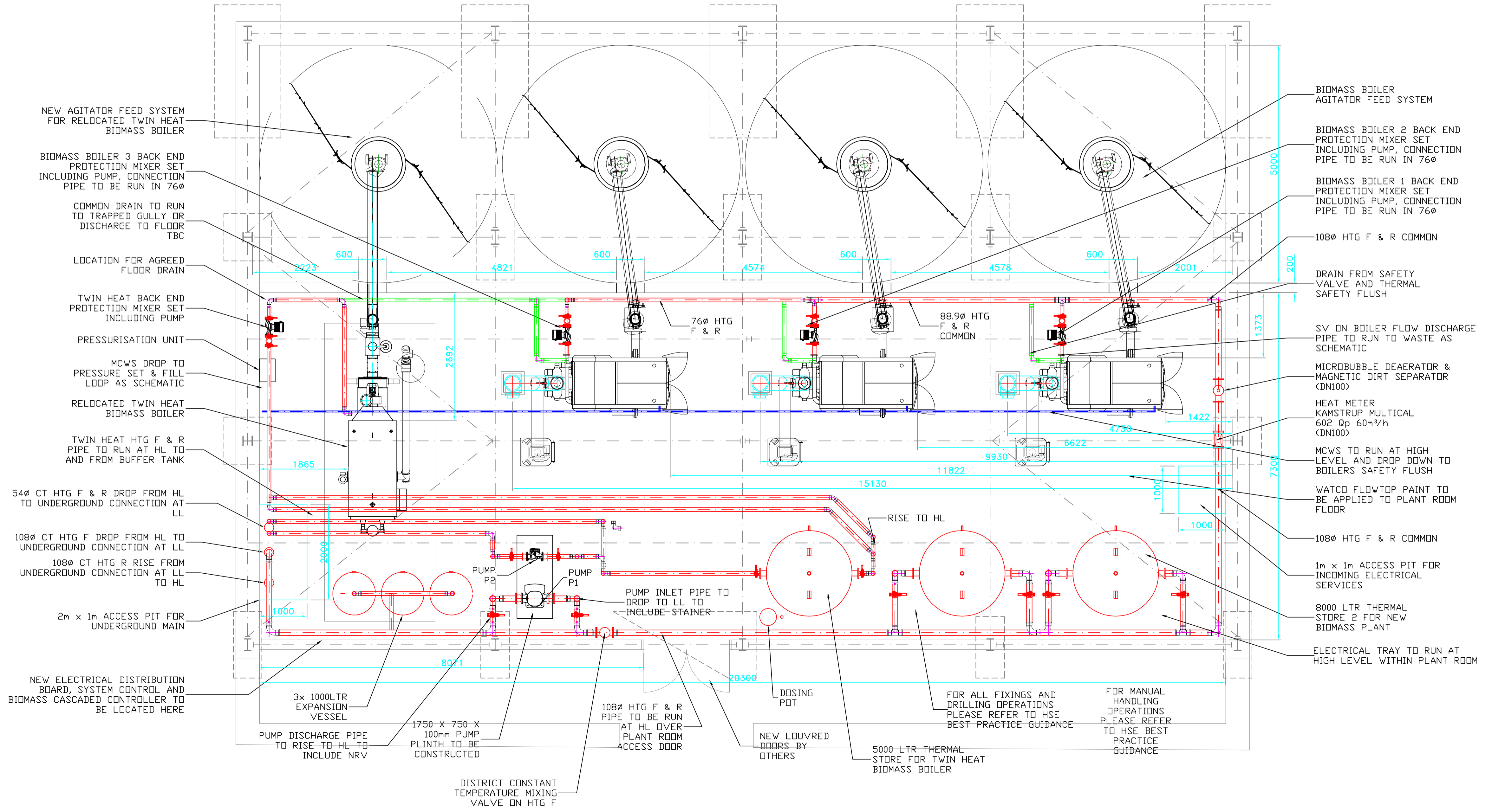


| ITEM | DESCRIPTION | SIZE | PART No. |
|------|-----------------------|----------------|---------------|
| 1 | APPLIANCE ADAPTOR | 252mm - 250mm | 3306055228160 |
| 2 | STRAIGHT LENGTH | 250mm x 500mm | 3306055202160 |
| 3 | 45° ELBOW | 250mm | 3306005214160 |
| 4 | SMOKE CONTROL LENGTH | 250mm | 3306055201160 |
| 5 | TWIN WALL INCREASER | 250mm x 300mm | 3077055229700 |
| 6 | CONDENSE COLLECTOR | 300mm | 3307055251200 |
| 7 | CUSTOM SUPPORT LEG | - | - |
| 8 | WALL SUPPORT ASSEMBLY | 300mm | 3307055321200 |
| 9 | 90° TEE | 300mm | 3307055220200 |
| 10 | DRAUGHT REGULATOR | 200mm | H38-160 |
| 11 | 135° TEE | 300mm | 3307055224200 |
| 12 | WALL BAND | 300mm | 3305055263520 |
| 13 | STRAIGHT LENGTH | 1000mm x 300mm | 3307055204200 |
| 14 | STORM COLLAR | 300mm | 1112041 |
| 15 | CONE TOP | 300mm | 3307055244200 |
| 16 | FLASHING | 300mm | 3305055263520 |



OTHER
FOR DISTRICT HEATING NETWORK DRAWING PLEASE SEE DWG T642 - 200
FOR ELECTRICAL DETAIL PLEASE REFER TO BMS MANUAL
FOR SERVICES LAYOUT DRAWING PLEASE SEE DWG T642 - 504



NOTES

NOTE 1: MAINS COLD WATER FEED MUST BE BETWEEN 1.5 - 3BAR. HAVE LOCAL ISOLATION AT THE POINT ENTRY INTO THE BOILER ROOM BE FITTED WITH A PRESSURE REDUCING VALVE BEFORE CONNECTING TO THE FILLING SYSTEM.

NOTE 2: DISCHARGE PIPE WORK THE OVER TEMPERATURE AND OVER PRESSURE DISCHARGE PIPE WORK MUST COMPLY WITH THE UK WATER REGULATIONS. THIS IS THE INSTALLERS RESPONSIBILITY.

NOTE 3: FILLING CONNECTION

NOTE 4: DRAIN OFF VALVES

NOTE 5: AUTOMATIC AIR VENTS (AAV)

NOTE 6: FLOW METER REQUIREMENTS: ALL FLOW METERS MUST BE INSTALLED IN ACCORDANCE WITH THE MANUFACTURERS INSTALLATION INSTRUCTIONS.

NOTE 7: RH TEMPERATURE SENSORS: THESE TEMPERATURE SENSORS SHOULD BE FITTED SO THEY CAN NOT BE REMOVED OR TAMPERED WITH AT ANY POINT.

NOTE 8: MAIN HEATING SYSTEM PUMP: THIS MIGHT NOT BE SIZED OR SUPPLIED BY TRECO, PLEASE CHECK YOUR QUOTE.

NOTE 9: EXTERNAL TERMINATION AT 108MM FROM GROUND LEVEL AND FITTED WITH A CAGE.

NOTE 10: DN125 TEE TO BE USED FOR CONVERGING FLOWS FROM BOILERS AND OUT TO CIRCUIT.

NOTE 11: SURGE PROTECTION TO BE INSTALLED BETWEEN BMS AND BIOMASS BOILER.

NOTE 12: ALL DIMENSION AND SIZES ARE DETAILED IN MILLIMETERS UNLESS OTHERWISE STATED.

NOTE 13: PIPEWORK PASSING THROUGH DESIGNATED FIRE COMPARTMENTS SHALL BE PROVIDED WITH APPROPRIATE FIRE PROTECTION AND ADEQUATE ACCESS.

NOTE 14: HEATING PIPEWORK SHALL BE INSULATED WHEN DISTRIBUTING IN ROOF SPACE, SERVICE VOIDS, BOWINGS AND BACK OF KITCHEN CABINETS.

NOTE 15: ALL EXPOSED HEATING PIPEWORK SHALL BE INSULATED AND BOXED IN.

NOTE 16: MECHANICAL CONTRACTOR TO ENSURE PROPER ACCESS TO COMPENSATING VALVES AND ISOLATING VALVES TO ALLOW FOR TESTING, YEARLY INSPECTION AND MAINTENANCE.

NOTE 17: THE DRAWING SHOWS A GENERAL REPRESENTATION OF THE EQUIPMENT AND PIPEWORK. ALL LOCATIONS AND DIMENSION TO BE CONFIRMED ON SITE.

NOTE 18: ALL ON SITE HEALTH AND SAFETY REGULATION ARE TO BE OBSERVED AT ALL TIMES.

NOTE 19: ALL REDUNDANT MATERIALS ARE TO BE REMOVED FROM SITE AND CORRECTLY DISPOSED.

NOTE 20: ALL LOW POINT SHALL BE PROVIDED WITH DRAINAGE COCKS AND ALL HIGH POINT WITH AIR VALVES.

NOTE 21: REGULATING VALVES SHALL BE INSTALLED TO ENSURE NO COMPONENTS ARE WITHIN TEN PIPE DIAMETERS UPSTREAM AND FIVE DIAMETERS DOWN STREAM OF ANY MEASURING DEVICE.

NOTE 22: MECHANICAL CONTRACTOR TO ALLOW ADEQUATE PROVISION FOR HEATING SERVICE PIPEWORK EXPANSION.

NOTE 23: THE CONTRACTOR SHALL ENSURE THEY ARE WORKING TO THE CURRENT ARCHITECTS DRAWING BEFORE COMMENCING WORKS ON SITE. ANY SERVICE INSTALLED TO THE WRONG ARCHITECTS DRAWING WILL BE THE RESPONSIBILITY OF THE CONTRACTOR TO RECTIFY.

NOTE 24: ALL HEATING WATER SERVICES SHALL BE FLUSHED AND CHEMICALLY TREATED AND SET TO WORK AS PER THE REQUIREMENTS OF BSRIA BG 22010.

| REV | DESCRIPTION | DATE |
|-----|----------------|------------|
| D | NOTES ADDED | 19/07/2016 |
| C | DIMS ADDED | 11/07/2016 |
| B | LAYOUT REVISED | 01/07/2016 |
| A | FIRST ISSUE | 13/06/2016 |

COFTON HOLIDAY PARK
EX6 8RP

INDICATIVE EQUIPMENT LAYOUT
ENERGY CENTER

INSTALLATION

ORIGINAL DRAWING SIZE A1 SCALE 1:50

| DRAWING NUMBER | REV. |
|----------------|------|
| T642 - 300 - 1 | D |

TRECO Ltd,
Pyramid House
1 Tiverton Way
Tiverton Business Park
Devon
EX16 6TG

Tel: 0845 1 30 90 12
Web: www.treco.co.uk
e-mail: info@treco.co.uk